

**Simrad PI50**  
Catch monitoring system

Simrad PI50  
PI50 网位移系统



New user interface  
Menu system in all languages  
New PI50 Receiver unit  
Innovative technology  
Software runs on personal computer  
Works with standard colour displays  
Prepared for wide screens (16:9)

新的用户界面  
多种语言的菜单系统  
全新 PI50 接收单元  
创新科技  
软件可运行在个人电脑  
可用于标准的彩色显示器  
准备宽屏（16:9）

全新PI50系统操作方便，并为未来的应用和功能开辟了新的可能性。

The new PI50 system is easy to operate, and opens up new possibilities for future applications and features.

网位移系统在今天的渔业领域已显得越来越重要，因为效率对于获利是至关重要的。Simrad PI50正是基于这点而制定，这些重要信息的取得和理解应用非常便容易。Simrad PI50 网位移与声纳和探鱼器具有相同的菜单结构，使得他们在驾驶室形成一个完美的系统。

PI50 接收机做可以看作一个全新的黑匣子，具有超稳定的信号接收功能，也能很方便面的取代老的PI系统，系统升级很简单。整个系统运行在带simrad自己设计获奖的人-机介面标准化PC机上。感应器数量，通道设置，信息显示从没有现在这样简易直观。该系统最多可以设置六个通道，选择用六种不同的测量/感应器。这将使你有能力测量一些关键性的参数。比如：网门宽度，网的平衡性，拖网的形状，鱼的捕获量等，并且以大体字和图表方式显示感应器当前信息，便于阅读。

PI50网位移使用广受赞誉的高质量PI传感器。它已被用于世界各地的众多系统。

以前所有的PI传感器可以在旧系统基础上轻松的升级。为客户节约成本多达6个传感器的组合使用，不管是拖网还是围网。Simrad PI50将确保您的作业安全和高效。

### 全新的接收器

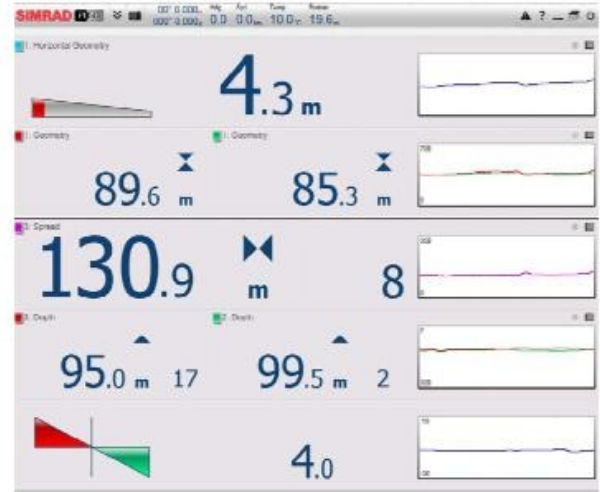
新的PI50接收机体积小，重量轻，易于安装。它与您的计算机使用串行线通信。连接的水听器使用与其他PI系统相同的插头。因此，新的接收器可以很容易地取代旧系统。

Catch monitoring is becoming more and more important in today's fishing where efficiency on all levels is crucial to stay profitable. The Simrad PI50 has been developed with this in mind where all important information is easy to find and understand. The new menu structure is the same as with Simrad sonars and fish finders making it a natural companion to those on the bridge.

A completely new "black box" PI50 Receiver has been designed with signal reception stability as the main focus. The receiver can easily replace any former PI system installed, thus making it an easy upgrade from older systems.

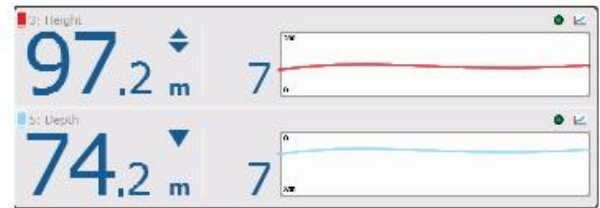
The main system operates on a regular PC with Simrad's own award winning MMI. Setting up sensors and channels has never been easier and information displayed has never been more instant accessible than now.

The system can receive up to six channels, or six different measurements/sensors. This will enable you to measure critical parameters like door spread, trawl geometry, catch volume etc. The information is displayed in big and easily read numbers, along with graphical presentation of certain sensors.



The PI50 uses the highly acclaimed robust PI sensors used in numerous systems around the world. All previous PI sensors can be received making an upgrade

from older systems economical and effortless. By combining up to six of these sensors the Simrad PI50 will ensure you safe and efficient trawling or purse seining.



### A brand new receiver

The new PI50 receiver is small, light and easy to install. It communicates with your computer using a serial line. The hydrophone is connected using the same plug as on the other PI systems. The new receiver can thus easily replace an old system.



d PI网位移系统可使用多种传感器。这些传感器可放置在拖网，围网，监控关键参数。传感器设计非常坚固的，它们能够承受拖网和围网所有的碰撞与摔打。

### Simrad PI海底接触感应器

装在拖网，深海拖网或围网底部，该传感器会告诉你，如果渔具触底，或上升。

### Simrad PI捕捉感应器

这是在网端的“眼睛”。有了此传感器，您可以轻松地监视拖网里的鱼的多少。

### Simrad PI深度感应器

当声纳和回声测深仪告诉你鱼群有多深，这方便你把渔具放去相同的深度。使用此传感器来监测和保持所需的深度。

### Simrad PI几何形状感应器

检查你的拖网，深海拖网和丹麦围网底部的几何形状。这是绳头（或脚缆）中心与网门或各网翼两端之间的距离。

### Simrad PI高度感应器

与内置的回声测深仪，这个新的PI传感器将会告诉你，你的底部或脚缆的准确距离。

### Simrad PI撕裂感应器

此传感器可让您监控你的渔网是否有破裂。

### Simrad PI围网测深仪

根据感应器在渔具上的位置，两个传感器可以测量从安位置到地表以下的深度和底部之上的高度

The Simrad PI Catch Monitoring systems can be used with a variety of sensors. All these sensors can be placed on your trawl or purse seine to monitor key parameters. The design of the sensors is extremely rugged, and they are built to withstand all the beating and battering they are subjected to on a trawl or purse seine.

#### Simrad PI Bottom Contact

Mounted on a bottom trawl, pelagic trawl or purse seine, this sensor will tell you if the gear touches the bottom, or lifts off.

#### Simrad PI Catch

This is your "eye" at the cod-end. With this sensor in use, you can easily monitor the filling rate and the amount of catch in the trawl.

#### Simrad PI Depth

When the sonar and echo sounder tell you how deep the school goes, it is good to know that you can place your fishing gear at the same depth. Use this sensor to monitor and hold the desired depth.

#### Simrad PI Geometry

Check the geometry of your bottom trawl, pelagic trawl and Danish seine. This is achieved by making accurate measurements of the distances between the centre of the headrope (or footrope) and each of the trawl doors or wing ends.

#### Simrad PI Height

With a built-in echo sounder, this new PI sensor will always tell you the exact distance to the bottom or the footrope.

#### Simrad PI Rip

This sensor allows you to monitor if your net is damaged.

#### Simrad PI SeineSounder

From its position on the gear, this dual sensor measures both the depth below the surface and the height above the bottom.

#### Simrad PI Spread

Used on bottom and pelagic trawls the PI Spread sensor provides crucial information about your trawl behaviour. It tells you the exact distance between the trawl doors.

#### Simrad PI Spread/Depth

This dual sensor measures the physical distance between the trawl doors as well as the depth of the trawl door.

#### Simrad PI Temperature

This sensor measures the water temperature. Fishing in too warm or too cold water may be just a waste of time and money.

#### Simrad PI Twin Spread

Used on twin trawls the Twin Spread and Remote sensors provide crucial information about your trawl behaviour. The three sensors working together tell you the exact distance between the two pairs of trawl doors.



#### A maritime computer

The computer provided optionally with the Simrad PI50 system is well known to our echo sounder users. Small, light and with no moving parts it is an excellent choice for demanding maritime operations.

### Simrad PI宽度感应器

使用于底部和远洋拖网，PI扩散传感器提供有关拖网性能的重要信息。它告诉你的拖网门之间的精确距离。

### Simrad PI宽度/深度感应器

这种双传感器测量拖网门之间的距离以及拖网门的深度。

### Simrad PI温度感应器

这种传感器用于测量水温。因为在过暖或过冷的水捕捞可能只是浪费时间和金钱。

### Simrad PI双扩张感应器

使用于双拖上，双扩张和远程传感器将会提供你有关拖网性能的关键信息。三个传感器告诉你两对拖网门之间的准确距离。

### 船用计算机

船用计算机是Simrad PI50系统可选性的计算机。它体积小重量轻，无运动部件，是要求苛刻的海上作业的最佳选择。

## 技术规范

- 主机
  - PI50接收机
  - 计算机
  - 彩色显示屏
- 传感器数：6

### PI50接收机

- 到PC接口：RS232串口
- 水听器插件：相同于PI30, PI32, PI44和PI54
- 电源：+24 VDC, 250 mA (1)

### 计算机最低要求

- 操作系统：微软视窗XP®SP3
- 处理器：酷睿，2GHz
- 内存：2 GB
- 硬盘：150 GB
- 串行线：一个RS232
- USB接口：是
- 图形适配器：VGA或DVI显示器类型
- 鼠标/指针设备
- 显示尺寸：使用适合计算机图形适配的器显示。软件支持16:9显示

(1) 包括115/230 VAC的电源。

## Technical specifications → Catch Monitoring

- Main units
  - PI50 Receiver
  - Computer
  - Colour display
- Number of sensors: 6

### PI50 Receiver

- Interface to PC: Serial RS232
- Hydrophone plug: Same as PI30, PI32, PI44 and PI54
- Power: +24 Vdc, 250 mA (1)

### Minimum computer requirements

- Operating system: Microsoft Windows XP® SP3
- Processor: Core2duo, 2GHz
- Memory: 2 Gb
- Harddisk: 150 Gb
- Serial line: One RS232
- USB: Yes
- Graphic adapter: VGA or DVI depending on display type
- Mouse/pointing device
- Display size: Use display fit to the computer's graphic adapter. Software supports 16:9 displays

(1) Power supply for 115/230 Vac is included with the delivery.



Fishermen all over the world rely every day on information from the Simrad PI catch monitoring systems. Information about door spread and door stability, catch volume in the cod end, and the height of trawl are all vital for an efficient trawler.

On a purse seine you receive information about net depth, sinking rate and thermo clines.

All Simrad PI Sensors are made in titanium and shock absorbing material. This is required to put up with the rough environment on professional fishing vessels working in every corner of the seas.

The Simrad PI50 system gives you full control from setting to catch, and thus allows you to be more profitable.

The Simrad PI50 Catch Monitoring system receives information from up to six sensors at the same time. The system uses a hull mounted, or can use a portable hydrophone. The depth of the fishing gear, water temperature, and the important bottom contact information are displayed in large digits and easily understandable graphics.

The Simrad PI50 system and sensors is designed with different codes. This avoids interference between vessels operating close together. The small size, quick update rate, long battery life and its long range capability, allows the Simrad PI sensors to be installed on any size net, from a small sardine net to a large tuna net.

The Simrad PI50 system interfaces to the latest professional Simrad fishfinders and sonars.

## Long history, long experience

Simrad has manufactured echo sounders for more than 60 years, and catch monitoring systems since the early 1960s. Simrad's first echo sounders came in 1951. These gave the fisherman a real advantage, he was able to see the depth, the bottom contours and even fish! In 1965, we released the cable based FH Trawl Eye. By means of a single cable, this early system was able to offer a wealth of information about the gear.

Since then, Simrad has been the world's leading manufacturer of echo sounders, sonars and catch monitoring systems. Fishermen all over the world trust Simrad to provide the very best in quality, and lead the way in innovative functionality, and to come up with better and more advanced designs. It's a well placed trust.



**悠久的历史，长期的经验**  
Simrad拥有超过60年制造回声测深仪和网位移系统的经验。在1951年，Simrad已制造出第一台测深仪。这给渔民带来优势，他们能够看到深度，底部的轮廓，甚至鱼！1965年，我们发布了基于电缆基础的HF拖网设备，它是单一电缆方式的系统。这些早期的系统能提供丰富的装备信息。从那时起，Simrad一直是世界领先的回声测深仪，声纳和网位移系统的制造商。遍布世界的渔民相信SIMRAD可提供最好的质量，创新的功能和更好更先进的设计。